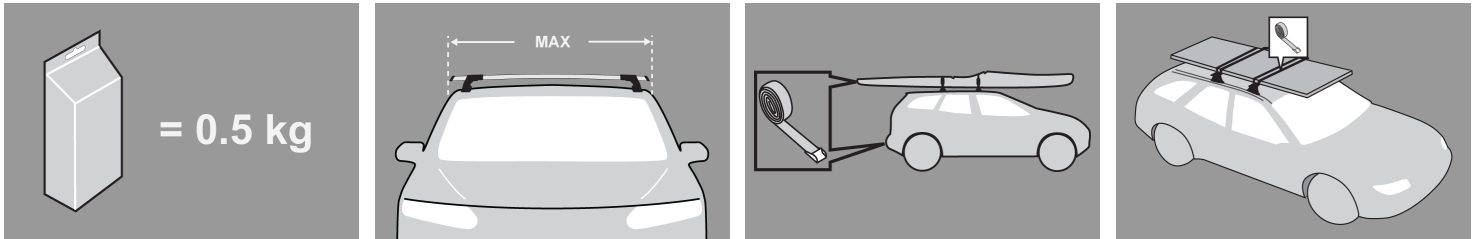
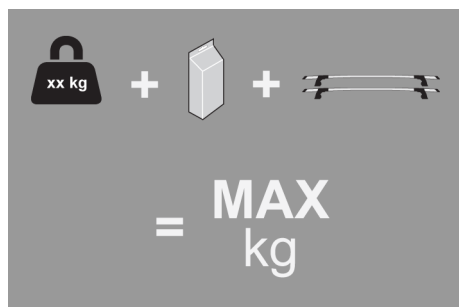


**GB** Fitting Instructions for Basic Carrier



x 4



## MAX kg



W/P WHD

## MAX kg



W/P WHD

Citroen							
Xantia , 5dr Hatch 93- 01	EU	50	50	Xantia , 5dr Hatch Nov 93- 01	NZ	50	50
Xantia , 5dr Hatch Sep 93-Jan 01	AU	50	50				
Holden							
Vectra , 4dr Sedan 96-Feb 03	NZ	50	50	Vectra , 4dr Sedan 96-Mar 03	AU	50	50
Vectra , 5dr Hatch 96-Feb 03	NZ	50	50	Vectra , 5dr Hatch 96-Mar 03	AU	50	50
Opel							
Vectra , 4dr Sedan 89- 95	EU	50	50	Vectra , 4dr Sedan 89- 95	NZ	50	50
Vectra , 4dr Sedan 95- 01	EU	50	50	Vectra , 5dr Hatch 95- 01	EU	50	50
Saab							
900 , 5dr Hatch 94- 98	EU	50	50	900 , 5dr Hatch Feb 94- 98	NZ	50	50
900 , 5dr Hatch Feb 94-Jan 98	AU	50	50	9000 , 4dr Sedan 92- 98	NZ	50	50
9000 , 4dr Sedan 92- 98	EU	50	50	9000 , 4dr Sedan Feb 92-Dec 98	AU	50	50
Vauxhall							
Cavalier , 4dr Sedan 89- 95	EU	50	50	Vectra , 4dr Sedan 95- 01	EU	50	50
Vectra , 5dr Hatch 95- 01	EU	50	50				

## First Time Installation



- Remove parts from packaging and check contents. Contact your Prorack dealer if parts are missing or damaged.



- This kit fits type A, B, C and D.
- These instructions show type A crossbar fitted. They also apply to type B, C and D.

**NOTE: Clamp images in these instructions may not be representative of the clamps in this kit**



- Use keys to remove covers.



- Use hex screwdriver to reverse adjusting screw 10 turns.



- Press adjusting screw and pull crossbar legs out. Refer to the crossbar instructions for crossbar adjustment.
- Ensure each end of the crossbar is adjusted equally.



- Remove locking screw.



- Fit clamp into clamp block at an angle as shown.



- Refit locking screw so that it goes through the hole in the clamp. Do not begin to tighten the locking screw.



- Fit rubber pad (supplied with crossbar) to foot.

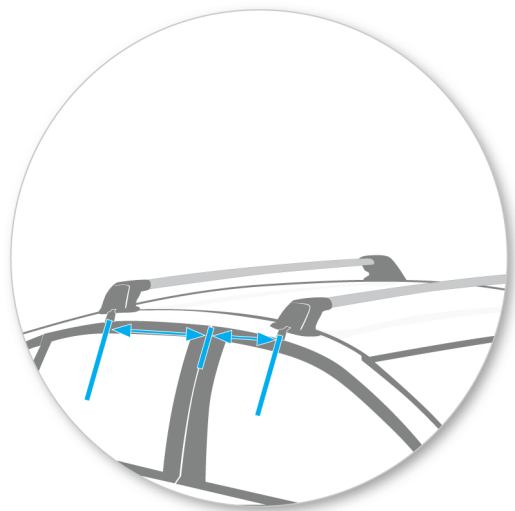


- Make sure the pad fits into the holes underneath the foot.

## Fitment



- Pull back rubber seal to expose fixed points on vehicle body.
- Reveal the fixed points. They may be concealed behind a painted sticker.



- Place crossbar on vehicle. Minimum recommended spacing between the bars is 700mm (unless otherwise stated).
- Please check the rear of this manual for information relating specifically to your vehicle.

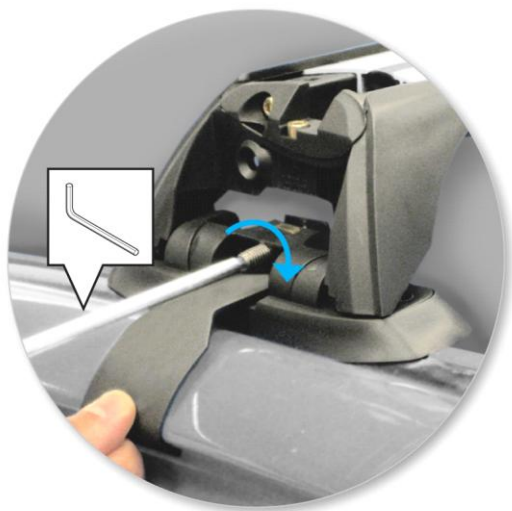


- Adjust crossbar in or out to suit vehicle. Refer to the crossbar instructions for crossbar adjustment.
- Ensure that the crossbar is adjusted evenly at both ends.
- Ensure the clamp pin is inserted into the fixed point and the clamp sits flat to the body side.
- Repeat for all four positions.
- Refit rubber seal over the clamp.



- Tighten adjusting screw to 5 Nm.





- Tighten locking screw on both legs evenly.



- Check crossbar is securely attached to the vehicle.



- Use keys to fit and lock covers



**CAUTION:**

**Recheck all fasteners immediately after a load is applied to the crossbars.**

**Regularly check screws are tight.**

---

## Maintenance

- Clean the car roof and surfaces of the product that will be in contact with the car roof.
- Follow the fitting instructions for fitting the product to your vehicle. Make sure all steps are carried out in order.
- Set crossbars a minimum distance of 700mm apart where no other distance is specified in the fitting instructions. This is especially important when carrying long loads.
- Check unit is securely attached whenever you refit it to the vehicle. If the unit feels loose, refer to the fitting instructions and readjust.
- Some sunroofs and radio antennae cannot be used when the product is fitted.
- Do not modify this product.
- Refer to the maximum permitted load capacity specified in the fitting instructions. Do not exceed the vehicle manufacturers roof load rating if it is lower than the maximum load capacity specified in the fitting instructions.
- Loads should not overhang the sides of the product and be evenly distributed with the lowest possible centre of gravity.
- Long loads should be secured with non-elastic straps to the front and rear of the vehicle.
- Objects with pointed ends (skis) should be carried with the pointed ends to the rear of the vehicle.
- Remove all loose or removable objects from the load prior to loading.
- Make sure all loads are securely fastened with non-elastic straps. Check regularly during longer journeys.

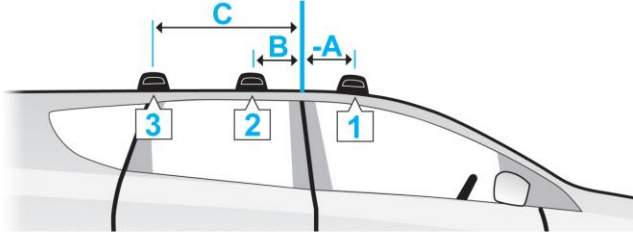
- A loaded roof rack system can alter the performance of your vehicle. Be especially aware of the effects of side winds, changing of direction, and braking performance. Avoid rapid acceleration and deceleration. Drive carefully.
  - Note that the total height of the vehicle increases when upright loads are carried.
  - Products should be locked during transport if they have locks fitted.
  - Check and replace worn out or defective parts.
  - Keep the product clean and maintained.
  - Never drive into a car wash with the roof rack system fitted.
  - Lubricate locks and adjusting screws at regular intervals.
  - Remove the products from the vehicle when not in use. Make sure all loose parts are stored safely.
- 

- Hubco Automotive Ltd  
P. O. Box 11017  
Christchurch  
NEW ZEALAND

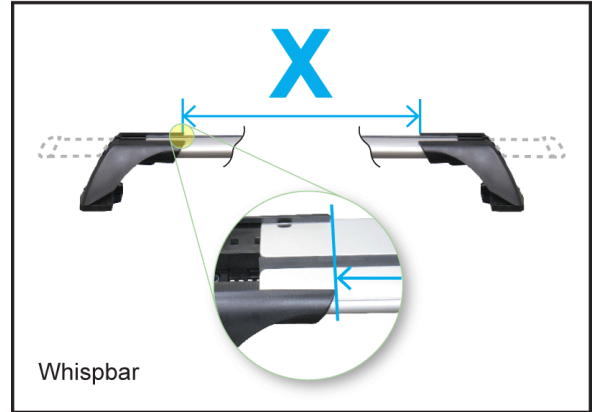
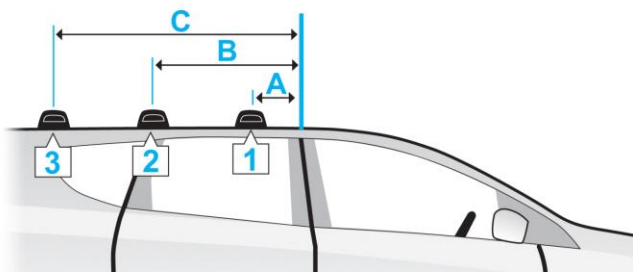
[www.whispbar.com](http://www.whispbar.com)

---

**A = -**



**A = +**



	<b>X</b>					
	<b>A</b>	<b>B</b>	<b>C</b>	<b>1</b>	<b>2</b>	<b>3</b>
Citroen Xantia , 5dr Hatch 93- 01 (EU)	-33cm -13 "	37cm 14 9/16ths"	-	845mm 33 1/4"	805mm 31 11/16ths"	-
Citroen Xantia , 5dr Hatch 93- 01 (EU)	-33cm -13 "	37cm 14 9/16ths"	-	805mm 31 11/16ths"	770mm 30 5/16ths"	-
Citroen Xantia , 5dr Hatch Nov 93- 01 (NZ)	-33cm -13 "	37cm 14 9/16ths"	-	845mm 33 1/4"	805mm 31 11/16ths"	-
Citroen Xantia , 5dr Hatch Nov 93- 01 (NZ)	-33cm -13 "	37cm 14 9/16ths"	-	805mm 31 11/16ths"	770mm 30 5/16ths"	-
Citroen Xantia , 5dr Hatch Sep 93-Jan 01 (AU)	-33cm -13 "	37cm 14 9/16ths"	-	845mm 33 1/4"	805mm 31 11/16ths"	-
Citroen Xantia , 5dr Hatch Sep 93-Jan 01 (AU)	-33cm -13 "	37cm 14 9/16ths"	-	805mm 31 11/16ths"	770mm 30 5/16ths"	-
Holden Vectra , 4dr Sedan 96-Feb 03 (NZ)	-25cm -9 13/16ths"	45cm 17 11/16ths"	-	790mm 31 1/8"	775mm 30 1/2"	-
Holden Vectra , 4dr Sedan 96-Feb 03 (NZ)	-25cm -9 13/16ths"	45cm 17 11/16ths"	-	825mm 32 1/2"	805mm 31 11/16ths"	-
Holden Vectra , 4dr Sedan 96-Feb 03 (NZ)	-25cm -9 13/16ths"	45cm 17 11/16ths"	-	788mm 31 "	774mm 30 1/2"	-
Holden Vectra , 4dr Sedan 96-Mar 03 (AU)	-25cm -9 13/16ths"	45cm 17 11/16ths"	-	790mm 31 1/8"	775mm 30 1/2"	-
Holden Vectra , 4dr Sedan 96-Mar 03 (AU)	-25cm -9 13/16ths"	45cm 17 11/16ths"	-	825mm 32 1/2"	805mm 31 11/16ths"	-
Holden Vectra , 4dr Sedan 96-Mar 03 (AU)	-25cm -9 13/16ths"	45cm 17 11/16ths"	-	788mm 31 "	774mm 30 1/2"	-
Holden Vectra , 5dr Hatch 96-Feb 03 (NZ)	-	-	-	-	-	-
Holden Vectra , 5dr Hatch 96-Mar 03 (AU)	-	-	-	-	-	-
Opel Vectra , 4dr Sedan 89- 95 (EU)	-30cm -11 13/16ths"	40cm 15 3/4"	-	780mm 30 11/16ths"	750mm 29 1/2"	-
Opel Vectra , 4dr Sedan 89- 95 (EU)	-30cm -11 13/16ths"	40cm 15 3/4"	-	815mm 32 1/16ths"	785mm 30 7/8"	-
Opel Vectra , 4dr Sedan 89- 95 (EU)	-30cm -11 13/16ths"	40cm 15 3/4"	-	775mm 30 1/2"	750mm 29 1/2"	-

Opel Vectra , 4dr Sedan 89- 95 (NZ)	-30cm	40cm	-	775mm	750mm	-
	-11 13/16ths"	15 3/4"	-	30 1/2"	29 1/2"	-
Opel Vectra , 4dr Sedan 89- 95 (NZ)	-30cm	40cm	-	780mm	750mm	-
	-11 13/16ths"	15 3/4"	-	30 11/16ths"	29 1/2"	-
Opel Vectra , 4dr Sedan 89- 95 (NZ)	-30cm	40cm	-	815mm	785mm	-
	-11 13/16ths"	15 3/4"	-	32 1/16ths"	30 7/8"	-
Opel Vectra , 4dr Sedan 95- 01 (EU)	-25cm	45cm	-	825mm	805mm	-
	-9 13/16ths"	17 11/16ths"	-	32 1/2"	31 11/16ths"	-
Opel Vectra , 4dr Sedan 95- 01 (EU)	-25cm	45cm	-	790mm	775mm	-
	-9 13/16ths"	17 11/16ths"	-	31 1/8"	30 1/2"	-
Opel Vectra , 4dr Sedan 95- 01 (EU)	-25cm	45cm	-	788mm	774mm	-
	-9 13/16ths"	17 11/16ths"	-	31 "	30 1/2"	-
Opel Vectra , 5dr Hatch 95- 01 (EU)	-	-	-	-	-	-
	-	-	-	-	-	-
Saab 900 , 5dr Hatch 94- 98 (EU)	-33cm	33cm	-	790mm	765mm	-
	-13 "	13 "	-	31 1/8"	30 1/8"	-
Saab 900 , 5dr Hatch 94- 98 (EU)	-33cm	33cm	-	760mm	735mm	-
	-13 "	13 "	-	29 15/16ths"	28 15/16ths"	-
Saab 900 , 5dr Hatch 94- 98 (EU)	-33cm	33cm	-	755mm	730mm	-
	-13 "	13 "	-	29 3/4"	28 3/4"	-
Saab 900 , 5dr Hatch Feb 94- 98 (NZ)	-33cm	33cm	-	755mm	730mm	-
	-13 "	13 "	-	29 3/4"	28 3/4"	-
Saab 900 , 5dr Hatch Feb 94- 98 (NZ)	-33cm	33cm	-	760mm	735mm	-
	-13 "	13 "	-	29 15/16ths"	28 15/16ths"	-
Saab 900 , 5dr Hatch Feb 94- 98 (NZ)	-33cm	33cm	-	790mm	765mm	-
	-13 "	13 "	-	31 1/8"	30 1/8"	-
Saab 900 , 5dr Hatch Feb 94-Jan 98 (AU)	-33cm	33cm	-	760mm	735mm	-
	-13 "	13 "	-	29 15/16ths"	28 15/16ths"	-
Saab 900 , 5dr Hatch Feb 94-Jan 98 (AU)	-33cm	33cm	-	755mm	730mm	-
	-13 "	13 "	-	29 3/4"	28 3/4"	-
Saab 900 , 5dr Hatch Feb 94-Jan 98 (AU)	-33cm	33cm	-	790mm	765mm	-
	-13 "	13 "	-	31 1/8"	30 1/8"	-
Saab 9000 , 4dr Sedan 92- 98 (EU)	-37cm	41cm	-	850mm	850mm	-
	-14 9/16ths"	16 1/8"	-	33 7/16ths"	33 7/16ths"	-
Saab 9000 , 4dr Sedan 92- 98 (EU)	-37cm	41cm	-	810mm	810mm	-
	-14 9/16ths"	16 1/8"	-	31 7/8"	31 7/8"	-
Saab 9000 , 4dr Sedan 92- 98 (NZ)	-37cm	41cm	-	850mm	850mm	-
	-14 9/16ths"	16 1/8"	-	33 7/16ths"	33 7/16ths"	-
Saab 9000 , 4dr Sedan 92- 98 (NZ)	-37cm	41cm	-	810mm	810mm	-
	-14 9/16ths"	16 1/8"	-	31 7/8"	31 7/8"	-
Saab 9000 , 4dr Sedan Feb 92-Dec 98 (AU)	-37cm	41cm	-	850mm	850mm	-
	-14 9/16ths"	16 1/8"	-	33 7/16ths"	33 7/16ths"	-
Saab 9000 , 4dr Sedan Feb 92-Dec 98 (AU)	-37cm	41cm	-	810mm	810mm	-
	-14 9/16ths"	16 1/8"	-	31 7/8"	31 7/8"	-
Vauxhall Cavalier , 4dr Sedan 89- 95 (EU)	-30cm	40cm	-	775mm	750mm	-
	-11 13/16ths"	15 3/4"	-	30 1/2"	29 1/2"	-
Vauxhall Cavalier , 4dr Sedan 89- 95 (EU)	-30cm	40cm	-	815mm	785mm	-
	-11 13/16ths"	15 3/4"	-	32 1/16ths"	30 7/8"	-
Vauxhall Cavalier , 4dr Sedan 89- 95 (EU)	-30cm	40cm	-	780mm	750mm	-
	-11 13/16ths"	15 3/4"	-	30 11/16ths"	29 1/2"	-
Vauxhall Vectra , 4dr Sedan 95- 01 (EU)	-25cm	45cm	-	788mm	774mm	-
	-9 13/16ths"	17 11/16ths"	-	31 "	30 1/2"	-
Vauxhall Vectra , 4dr Sedan 95- 01 (EU)	-25cm	45cm	-	790mm	775mm	-
	-9 13/16ths"	17 11/16ths"	-	31 1/8"	30 1/2"	-
Vauxhall Vectra , 4dr Sedan 95- 01 (EU)	-25cm	45cm	-	825mm	805mm	-
	-9 13/16ths"	17 11/16ths"	-	32 1/2"	31 11/16ths"	-
Vauxhall Vectra , 5dr Hatch 95- 01 (EU)	-	-	-	-	-	-
	-	-	-	-	-	-